

STERLING 800 - TIMBER

Capacity:

- Maximum door weight: 800kg.
- Maximum door height: 5200mm.
- Door thickness: 51mm - 63mm.

Application:

For bottom rolling wooden doors in a range of commercial and industrial applications, especially where the supporting structure or lintel is insufficient for the weight of the door or headroom is limited. Where doors are fitted externally, a canopy is recommended to protect the top guide channel, brackets and top guide rollers and to accommodate different building designs, doors can slide to one or both sides.

Components:

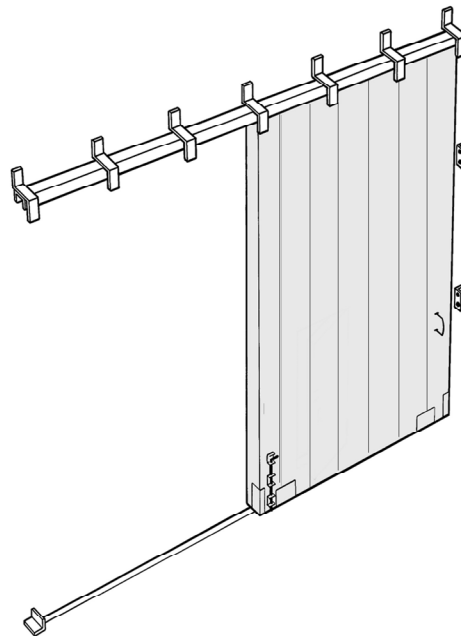
- Top guide channel - galvanised (99). Available in 2m and 3m lengths.
- Brackets - single run, face fix (31).
- Brackets - single run, jointing (31X).
- Guides - wooden door (53/99).
- Bottom roller - wooden door (3).
- Bottom rail (298). Available in 2m and 3m lengths.

Optional Extras:

- Flush Pulls.
- Surface Bolts.
- Flush Bolts.
- Door Stops.

Please note:

- For best operation, door width should not be less than half the door height.
- Top guide channel should be twice the width of the doors or more if the doors slide further.
- Brackets should be fixed every 900mm max. and at channel joints.
- Guides two required per door.
- Bottom rollers two required per door.
- Please refer to the component section for component options and technical detail.



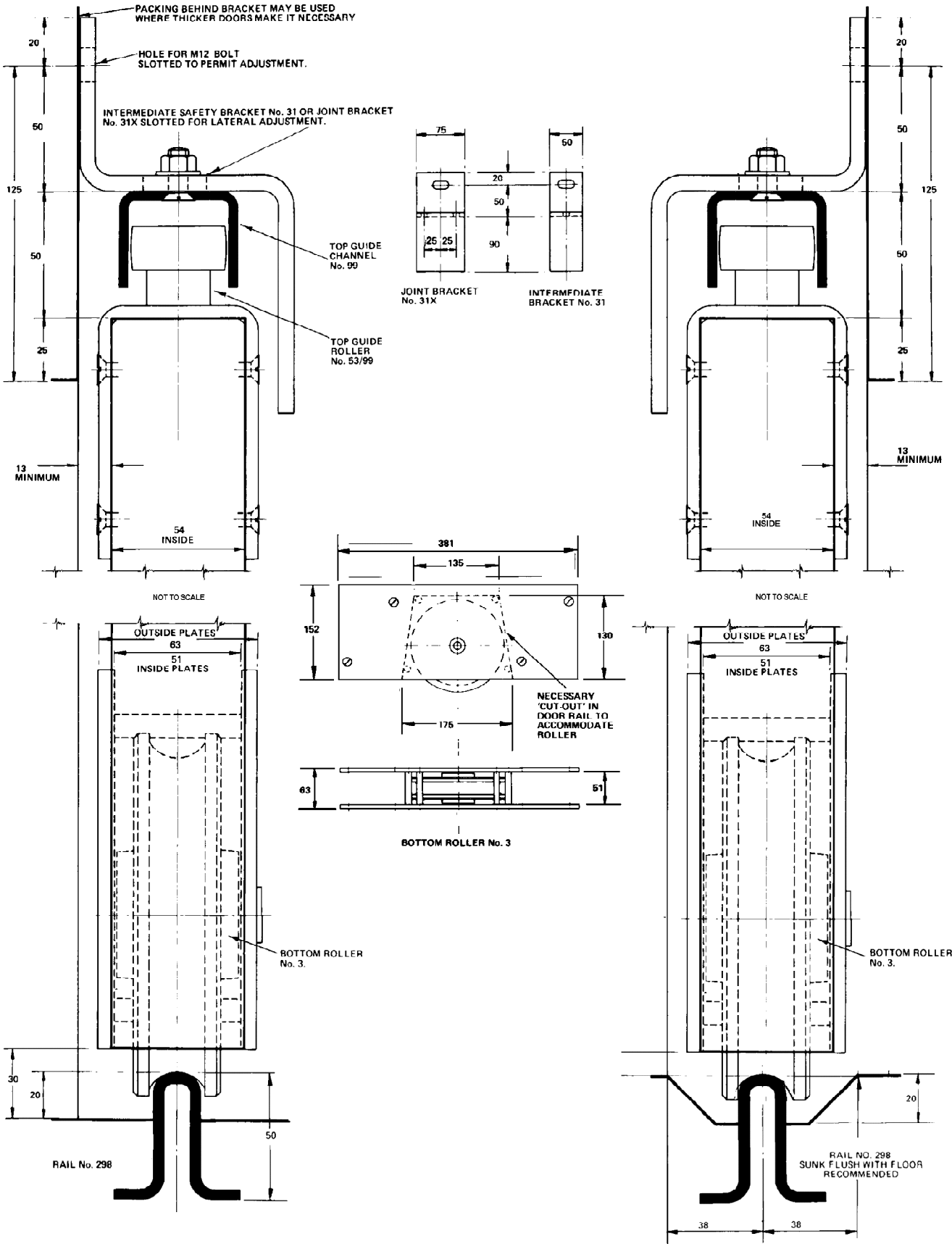
STERLING 800 - TIMBER

EXT



STERLING 800 - TIMBER

STERLING 800 - TIMBER



STERLING 800 - METAL

Capacity:

- Maximum door weight: 800kg.
- Maximum door height: 5200mm.
- Door thickness: Min. 60mm.

Application:

For bottom rolling metal doors in a range of commercial and industrial applications, especially where the supporting structure or lintel is insufficient for the weight of the door or headroom is limited. Where doors are fitted externally, a canopy is recommended to protect the top guide channel, brackets and top guide rollers and to accommodate different building designs, doors can slide to one or both sides.

Components:

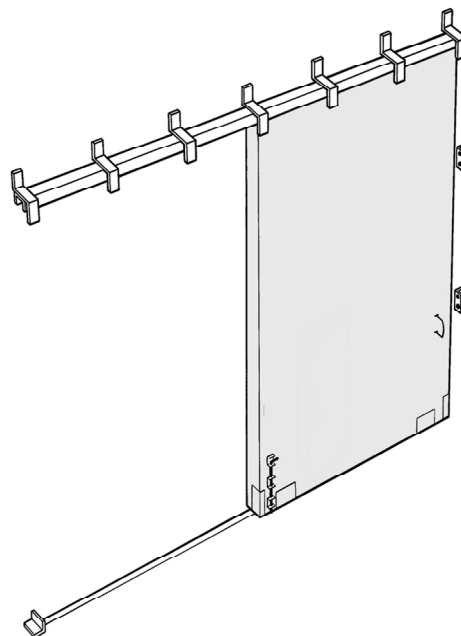
- Top guide channel - galvanised (99). Available in 2m and 3m lengths.
- Brackets - single run, face fix (31).
- Brackets - single run, jointing (31X).
- Guides - metal door (104/99).
- Bottom roller - metal door (3S).
- Bottom rail (298). Available in 2m or 3m lengths.

Optional Extras:

- Flush Pulls.
- Surface Bolts.
- Flush Bolts.
- Door Stops.

Please note:

- For best operation, door width should not be less than half the door height.
- Top guide channel should be twice the width of the doors or more if the doors slide further.
- Brackets should be fixed every 900mm max. and at channel joints.
- Guides two required per door.
- Bottom rollers two required per door.
- Rollers should be positioned securely in the bottom door frame section by welding or bolting.
- Please refer to component section for component options and technical detail.



STERLING 800 - METAL

EXT



STERLING 800 - METAL

STERLING 800 - METAL

